

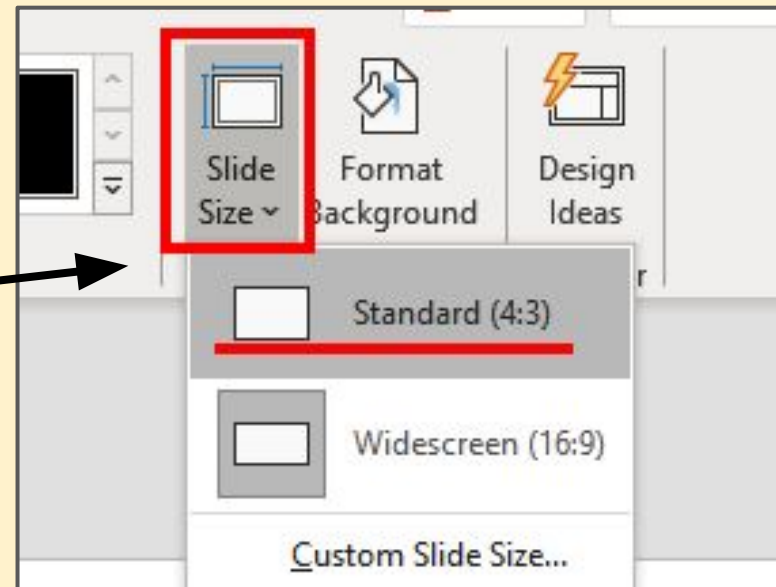
# IMMP skills - screen size

Use the Design tab at the top



Click **Slide Size** on the right

- Choose Standard (4:3)



# IMMP skills - kiosk mode

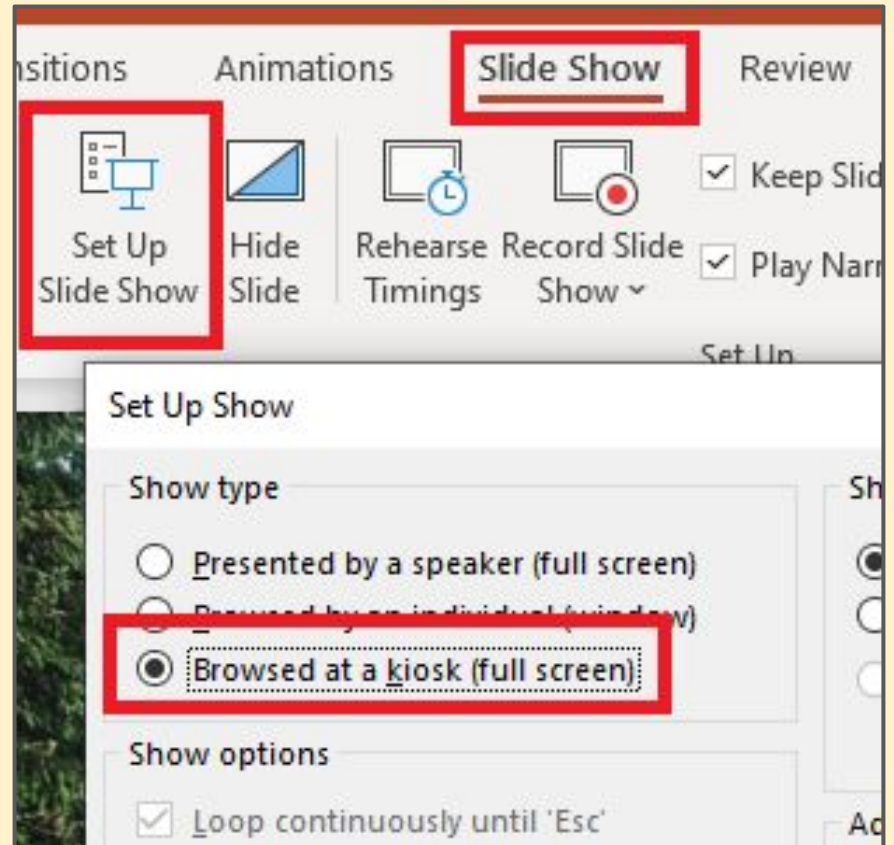
Kiosk mode forces the user to use buttons - they can't just press the spacebar and move from slide to slide.

This is essential for an IMMP piece of work

## Slide show

- > Set up Slide Show
- > Browsed at a kiosk

And then test!



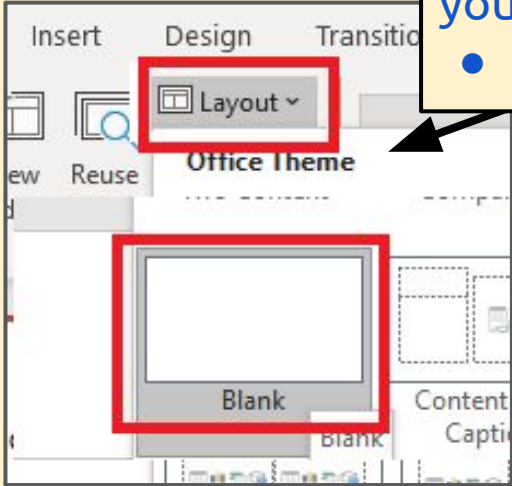
# IMMP skills - blank slides



Use **New Slide** and **Layout** to get slides setup right

Blank slides work best - you have control

- **Layout > Blank**



Add new blank slides

- **New slide > Blank**

