

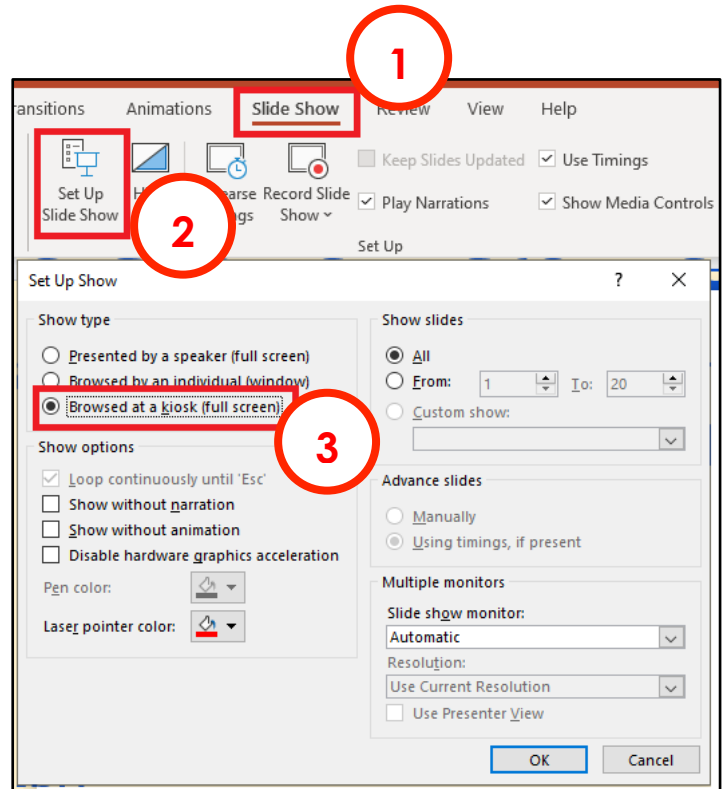
Setting up an Interactive Presentation

You need someone viewing your interactive presentation to **only** be able to move through the slides by using buttons.

They **can't** be allowed to move through the slides just by using arrow keys, for example.

To do this:

1. Click **Slide Show** on the **top menu**
2. Choose **Set Up Slide Show**
3. **Tick** the **Browsed at a kiosk (full screen)** option
4. Click **OK**



IMPORTANT

Then **test** that your slide show works as you intend it to.

You might find:

- you need to add buttons
- you need to fix links

Then **test again** until it's right