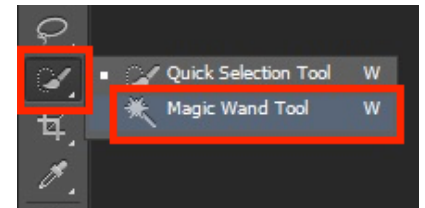


Photoshop – Coloured Layers

It's possible to apply different colours and other techniques to specific parts of an image.

1. Open the image to edit in **Photoshop**
2. Select the **Magic Wand Tool** from the **left toolbar** (you may need to click and hold down the **Quick Selection Tool**)
3. **Click** on part of the sky on the left hand side of the image. An area should be selected
4. Hold down the **Shift key** and **click on another part of the sky**. You'll notice a small **+** next to the mouse arrow. This tells you that you're adding to the selection
5. Carry on until you have the **whole of the sky** selected



Hold Shift to add areas to the selection

6. **Layer > New > Layer Via Copy**
This will create a new layer with just the sky on it
7. Make sure you are clicked on the new layer

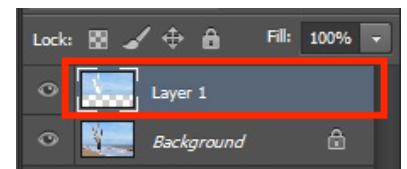
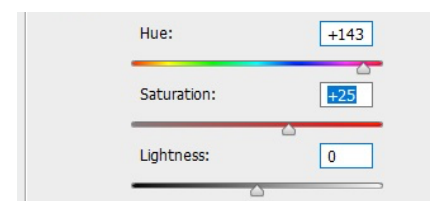


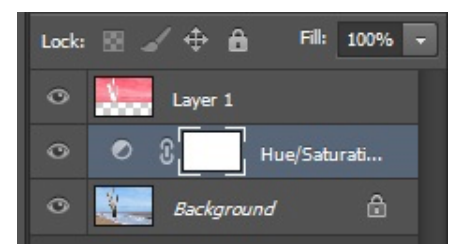
Image > Adjustments > Hue/Saturation

Use the **Hue slider** to change the colour of the sky. You might want to make some use of the **Saturation slider** as well



I used these settings. Experiment!

8. Click back on the **Background layer** on the layers panel to the right
Layer > New Adjustment Layer > Hue/Saturation > click OK on the dialogue box and colour the rest of the image by using the **Hue slider**



The order of layers is crucial

It's important to check the order of layers on the right hand layers panel. You can drag adjustment layers up and down if necessary to get the effect you want