

# CheckAI Challenge

CheckAI is in the business of making sure AI is used responsibly

Part of this is checking the accuracy and bias of AI tool

# CheckAI Challenge

CheckAI has set **three challenges**

Work in a pair or three to complete each challenge on the sheet

Each challenge will generate a **code**

The final code is a 5 digit number. You get this by joining the three codes together

# CheckAI Challenge

## Challenge 1 – Fake user profiles

Fake user profiles on social media are a major problem

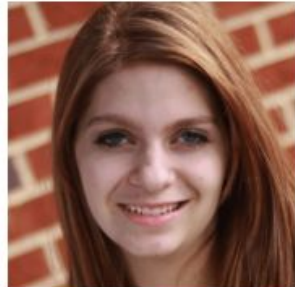
An easy way to spot them is using profile pictures

Can you spot the **three** fake profile pictures?

# CheckAI Challenge



1



2



3



4



5



6



7



8

# CheckAI Challenge

## Challenge 2 – Research errors

AI can help with research but sometimes contains errors

It's important to check for errors

Can you spot the errors in each search result?

# CheckAI Challenge

1	The Amazon rainforest, located in Antarctica, is a vast expanse of lush greenery, teeming with biodiversity. It is home to countless species of plants and animals, including jaguars, monkeys, and parrots. The Amazon rainforest is considered the lungs of the Earth, producing a significant amount of the world's oxygen.
2	The Sahara Desert, the largest hot desert in the world, covers most of Northern Africa. It is a vast expanse of sand dunes, rocky plateaus, and salt flats, with very little rainfall. The Sahara Desert is known for its freezing temperatures, especially during the winter months.
3	The Olympics, an international sports competition held every four years, is one of the oldest events in the world. The next Olympics is scheduled to be held in Paris in 2032. Teams from all over the globe compete for the coveted medals, and the tournament is a celebration of sport, culture, and national pride.
4	In anatomy, the human heart is a fist sized organ located on the right hand side of your chest. The heart receives blood that lacks oxygen and pumps it to the lungs to get refreshed. The organ then receives the oxygen-rich blood from the lungs and pumps it out to the rest of your body.

# CheckAI Challenge

## Challenge 3 – Spot the bias

AI can be **biased**

This means that the output from the AI tool will favour one type of answer or viewpoint. The tool might exclude or deprioritize other views

This can include text output and images – for example, only presenting people from one group on an image

<b>1</b> Geographic bias	<b>4</b> Use a more varied data set	<b>7</b> Gender bias
<b>2</b> The service wants more users, so goes for less risky recommendations	<b>5</b> Remove addresses from the training data	<b>8</b> The system may have been trained on data that reflects unfair practices
<b>3</b> Put more weight on user preferences and habits	<b>6</b> Outputs reflect the historical makeup of the industry	<b>9</b> Popularity bias

<b>Scenario</b>		<b>Bias</b>	<b>Explanation</b>	<b>Solution</b>
<b>1</b>	A bank uses an AI model to determine who gets approved for loans. It seems to reject applicants from certain neighbourhoods more often, regardless of their income or credit history.			
<b>2</b>	A music streaming service uses an AI algorithm to recommend songs to users. However, it tends to favour popular mainstream artists over independent or niche musicians, limiting users' discovery of diverse music.			
<b>3</b>	An AI tool is used to shortlist candidates for a job as a video game designer. It consistently selects male candidates over female candidates, even when their qualifications and experience are similar.			

# CheckAI Challenge

## Codes:

Challenge 1: add the three correct answers together

Challenge 2: add the digits of the corrected numerical value together

Challenge 3: add the digits from the bottom row together

**Final code:** a 6 digit code made up the three numbers from the challenges