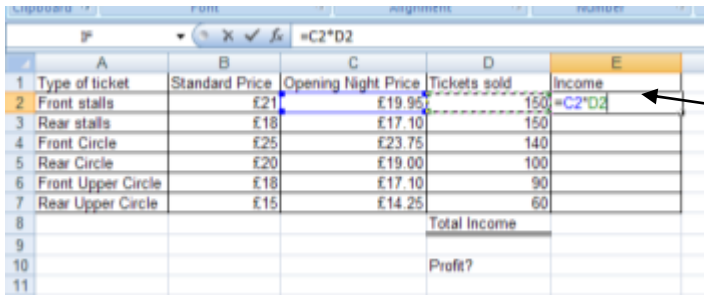
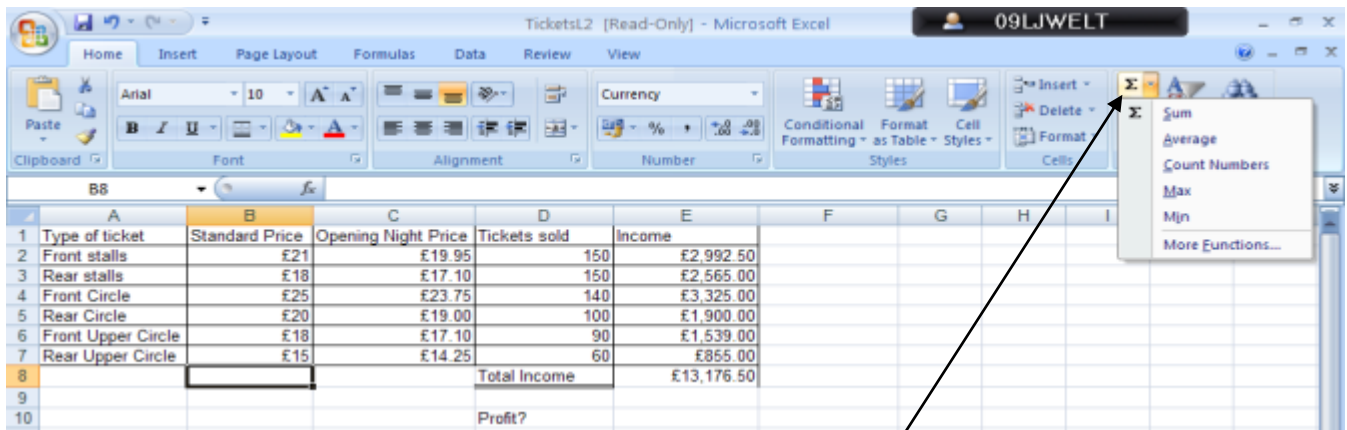


## Formulas, Functions and Ifs



	A	B	C	D	E
1	Type of ticket	Standard Price	Opening Night Price	Tickets sold	Income
2	Front stalls	£21	£19.95	150	=C2*D2
3	Rear stalls	£18	£17.10	150	
4	Front Circle	£25	£23.75	140	
5	Rear Circle	£20	£19.00	100	
6	Front Upper Circle	£18	£17.10	90	
7	Rear Upper Circle	£15	£14.25	60	
8				Total Income	
9					
10				Profit?	
11					

To find the total income the sum you would use is “=C2\*D2”. The price times the total tickets sold.

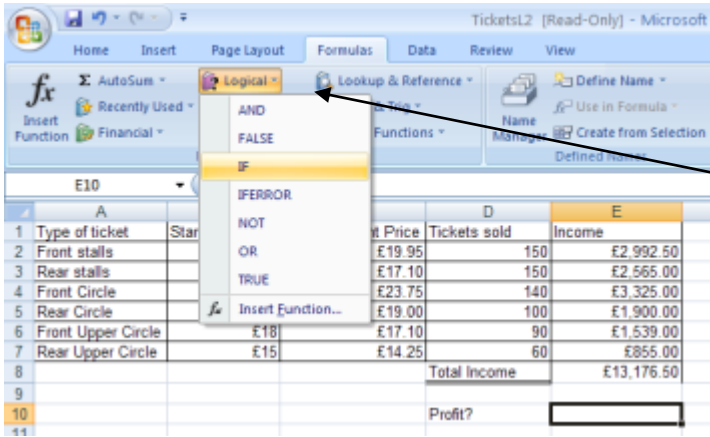


The screenshot shows the Microsoft Excel interface with the 'Formulas' ribbon selected. A dropdown menu is open, showing various functions: Sum, Average, Count Numbers, Max, Min, and More Functions... An arrow points from the text below to the 'Sum' function in the dropdown menu.

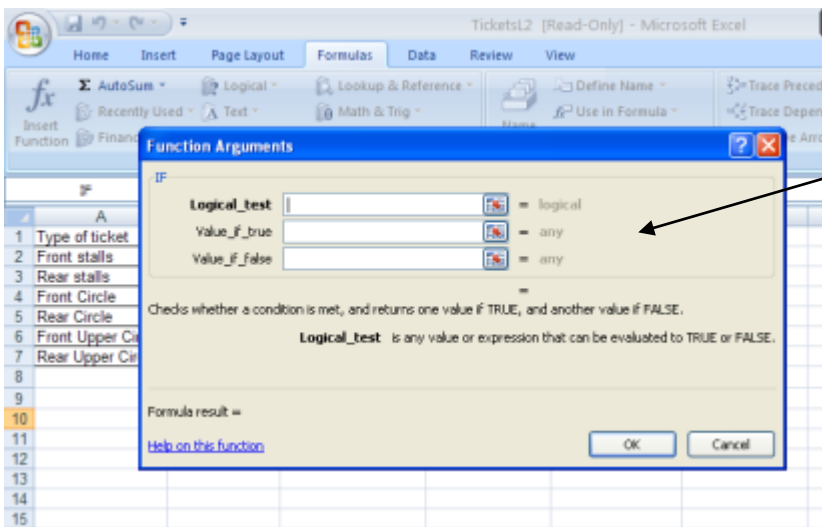
You click in the cell where you want the answer and use the drop down of the weird E symbol shown here.

And you can use this button for any function you need whether it be to add all the sums up or find the average or the max or min number there.

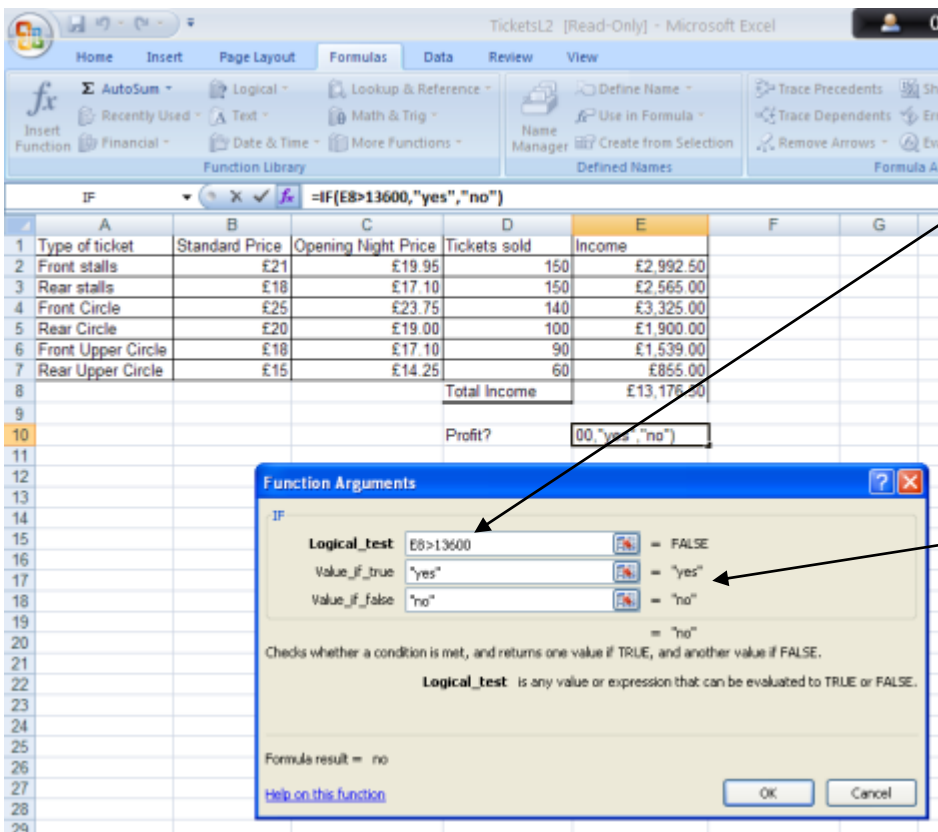
# Formulas, Functions and Ifs



If you need to find out whether there is a profit or not don't just write "yes" or "no". You need to go on the formulas task and click onto logical.



When you click on "IF" it will come up with this.



When you need to find out whether something has made a profit or not you need to make the sum (the number you need to see whether it's greater or less) by using either < or > the number you need to see if it is greater or less than.

In these two boxes you need to write yes and no.